

SPECIFICATIONS

Measurements

Frequency
200 kHz

Beam Angle
7

Depth Resolution
0.1ft/0.01m

Accuracy
±1cm±0.1 D (0.1% of depth value)

Ping Rate
14Hz, Maximum 30Hz

Sound Velocity
1300-1700m/s, resolution is 1m/s

Depth Range
0.3-300m/900ft

Draft
0-9.9m

Gain Control
AGC and TVG, depth and gain, a double door tracking

Output data format
RUIDE, SDH-13D, DES025, INN455, ODOM etc

Physical

Environmental
-30 ~+60 non-condensing

Output Power
Up to 300 watts

Power Supply
9-15V DC, less than 25w,
110~265V AC (optional),

Dimension
35cm 29cm 14cm

Weight
7.5kg

Hardware part

Embedded system index
CPU frequency 1.6GHz
Internal memory 2G
Memory capacity 8G high-speed CF card
(supports extended storage)

I/O interface
2 USB
2 RS232
1 VGA interface

Display Panel Layout
12.1-inch color LCD
Touch screen
Embedded windows XP OS
Power ON/OFF
Interface protection
Separate Panel Overlay for
Keyboard
Mouse

Remarks

Measurement accuracy and operation range might vary due to atmospheric conditions, signal multipath, obstructions, observation time, temperature, signal geometry and number of tracked satellites. Specifications subject to change without prior notice.



STANDARD CONFIGURATION		
1. Echo Sounder SDE-28S+	1pc	
2. Carrying Case (for echo sounder)	1pc	
3. 200KHz Transducer	1pc	
4. Transducer Pole	1pc	
5. Carrying Case for Transducer	1pc	
6. Double RS-232 Communication Cable	1pc	
7. 220V External Power Supply Cable	1pc	
8. 220V External Power Supply Cable Adapter	1pc	
9. 12V External Power Supply Transfer Cable	1pc	
10. Keyboard (USB)	1pc	
11. Mouse (USB)	1pc	
12. Adapter Cable for Mouse & Keyboard	1pc	
13. Pen Drive	1pc	
14. SDE-28S+ Software	on board	
15. PowerNav Software (with dongle key)	on board	

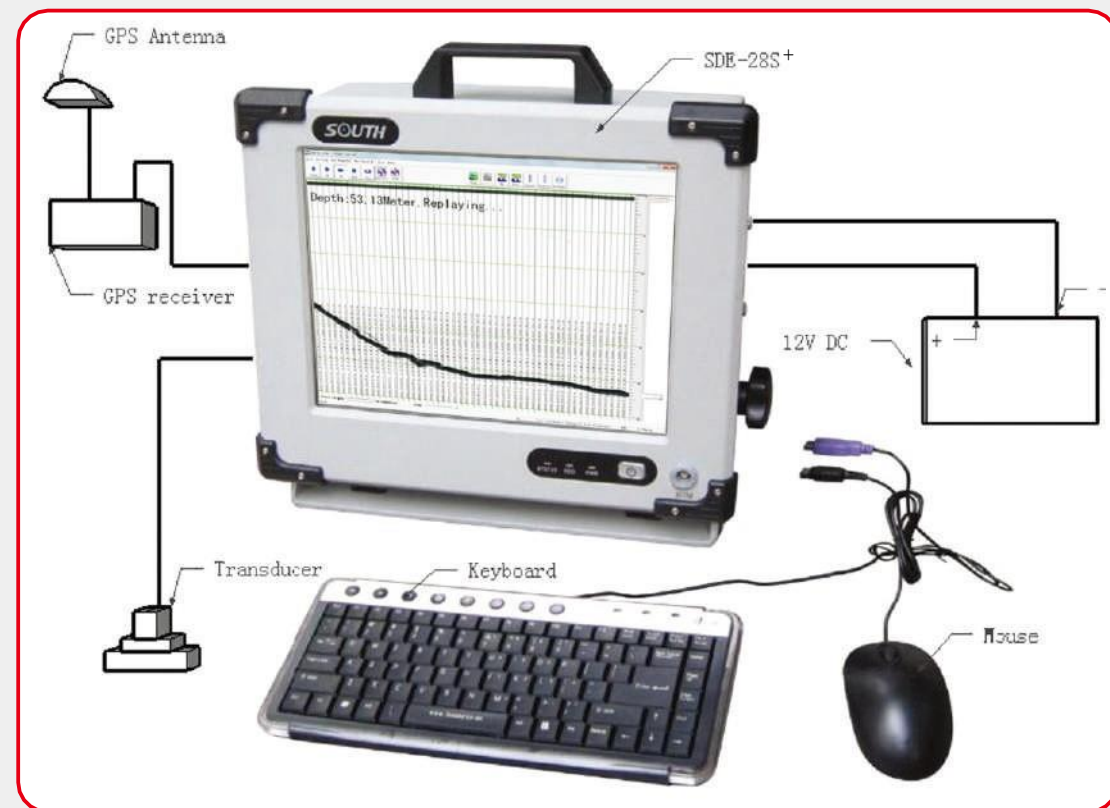


SDE-28S+

Single Frequency Digital Echo Sounder



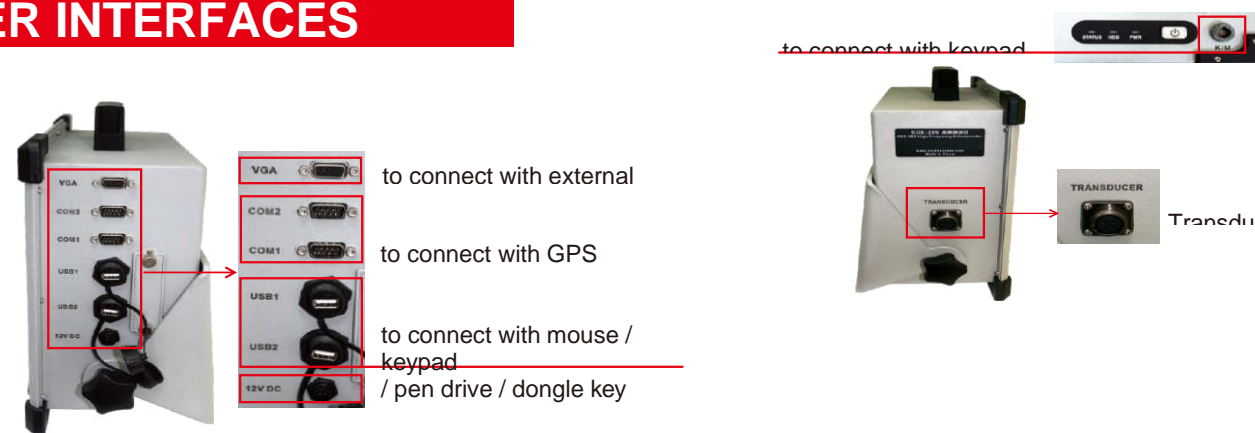
NS TECH SURVEY PVT LTD.
Add: B3/H7, BASEMENT, AGGARWAL PLAZA, NETAJI SUBHASH PLACE NEW DELHI-110034
[Tel:-011-41005275](tel:011-41005275) / [9911283856](tel:9911283856) / [9650277697](tel:9650277697) / [9717490601](tel:9717490601)
E-mail: sales@ruiideindia.com, www.ruiideindia.com / www.nstechconsultant.com
BRANCHES:- **AHEMDABAD BHOPAL HYDERABAD MUMBAI CHENNAI**



KEY FEATURES

- ✓ Embedded WindowsXP operating system, user-friendly interface
- Integrated with both computer and echo sounder at industrial level, yet low power consumption
- Full aluminum housing, compact and handy, particularly designed for less-than-ideal circumstances
- High-speed DSP chip processing technology to ensure reliable waveforms and depth values
- Supports NMEA-0183 communication to gain orientation information
- High compatibility, flexible to connect different GPS devices
- Built-in flash memory upgradeable to larger capacity for diverse demands
- 12.1-inch color LCD featuring a wide viewing angle and adjustable brightness
- Automatic storage of depth data up to 24 hours, supports replay

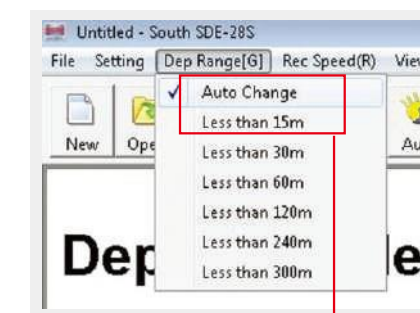
USER INTERFACES



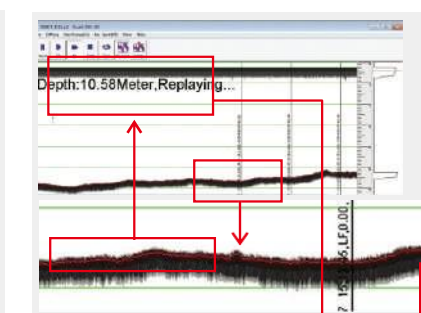
ONBOARD SOFTWARE

SDE-28S+ (for depth measurements)

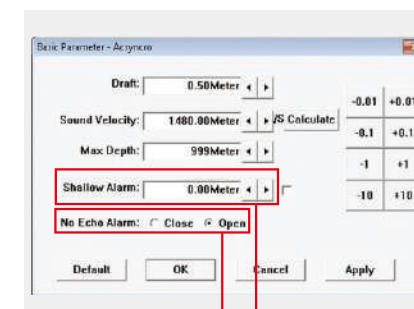
Real-time vivid display of graphic and data,
easy approach to underwater waves
Integrated sound velocity calculation for
more accurate results
Smart alarm for shallow water and “No echo”
tracking to secure hydrographic operations
Real-time display of the water depth value
tracking lines, easy to be compared with
underwater waves
Automatic measurements and switch,
Intelligent operation, easy to use
Optional output formats and convenient



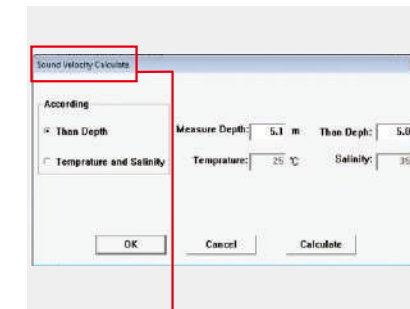
Auto Change
Of Depth Range



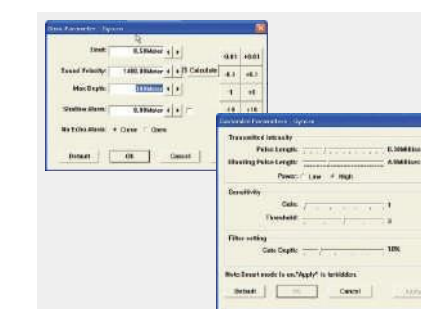
Real-time display of
water depth data



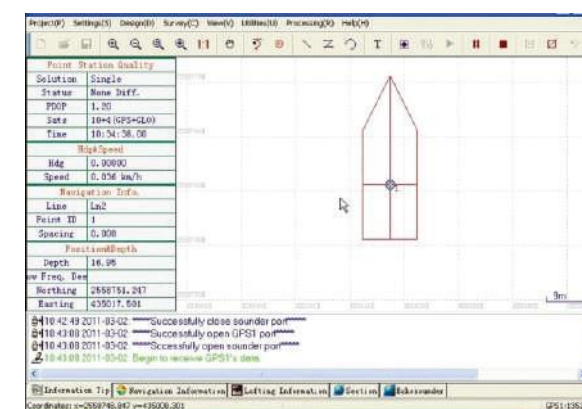
“No Echo” Alarm Shallow-water Alarm



Sound Velocity Calculation



Basic and Customized Parameter Settings



PowerNav

PowerNav (for navigation purpose)

New software kernel, faster processing and more stable
Professional Engineering map sheet and data management, wizard-
style parameter setting
High compatibility, flexible to import graphs and data, connectible to
all GPS devices and echo sounders
Modular designed, meets diverse needs of hydrographic engineering
projects
Direct graphical navigation window box, auto voice prompt for yaw
Intelligent scheme line model, available for fast drawing of waterway,
Area, arc, etc.
Customized formats for data export edit, easy to export To all
Mapping software

APPLICATIONS

Coastland, fairway depth measurements
Freshwater, lake, reservoir depth measurements
Dredging engineering measurements
Integrated automated depth measurement
(navigation measurement software required)
Positioning navigation terminal (compatible to all
GPS models with NMEA-0183 data exported) for
dredging engineering projects



A Variety of Solutions for Different Hydrographic Projects
(Note: different accuracy levels result from working with different GPS receivers.)